

Healthcare Savings, Reduced Absenteeism and Comprehensive Wellness

BUILDING ENTRANCE DOORS

When entering a building/workplace we are bombarded by



The accumulation of airborne pollutants – including germs, CO2, allergens and VOCs – can cost as much as \$6,500 per employee per year in lost productivity. Despite these contaminants causing day-to-day distractions and contributing to absenteeism, little is done to improve indoor air quality in the workplace. Facilities and building managers can help alleviate discomfort and provide healthier facilities by cleaning the air. **(Facility Executive Magazine; June 2016)**



Particulates in the Air (in Microns):

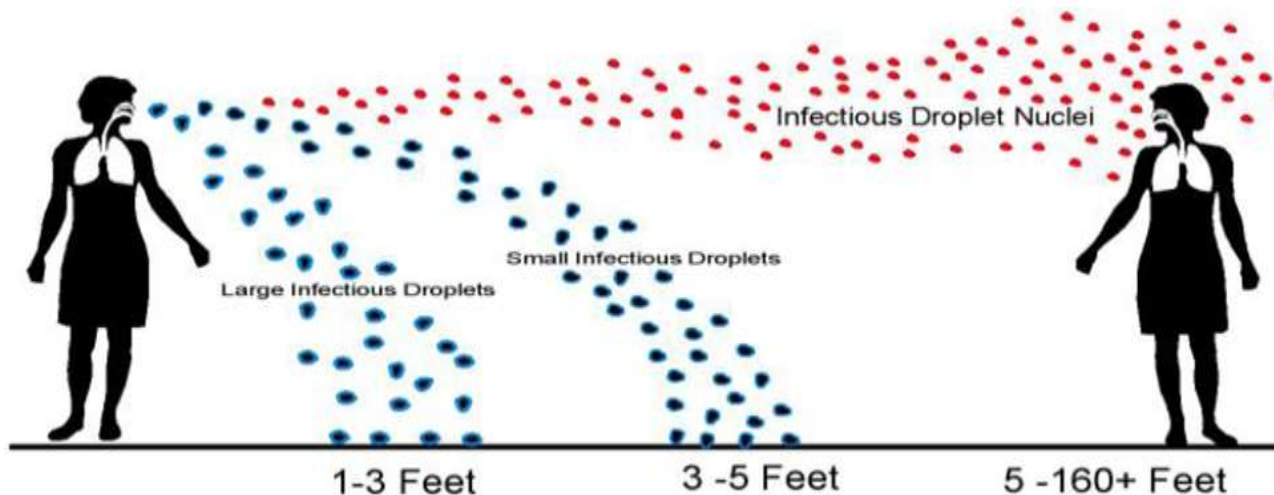
Postage Stamp 25,400

Human Hair 40 – 300

Smoke .01 – 100

.01- .10 microns suspended in air and picked up by HVAC filter and remaining fall on a surface or on the ground

Infectious Droplets & Droplet Nuclei travel lengths

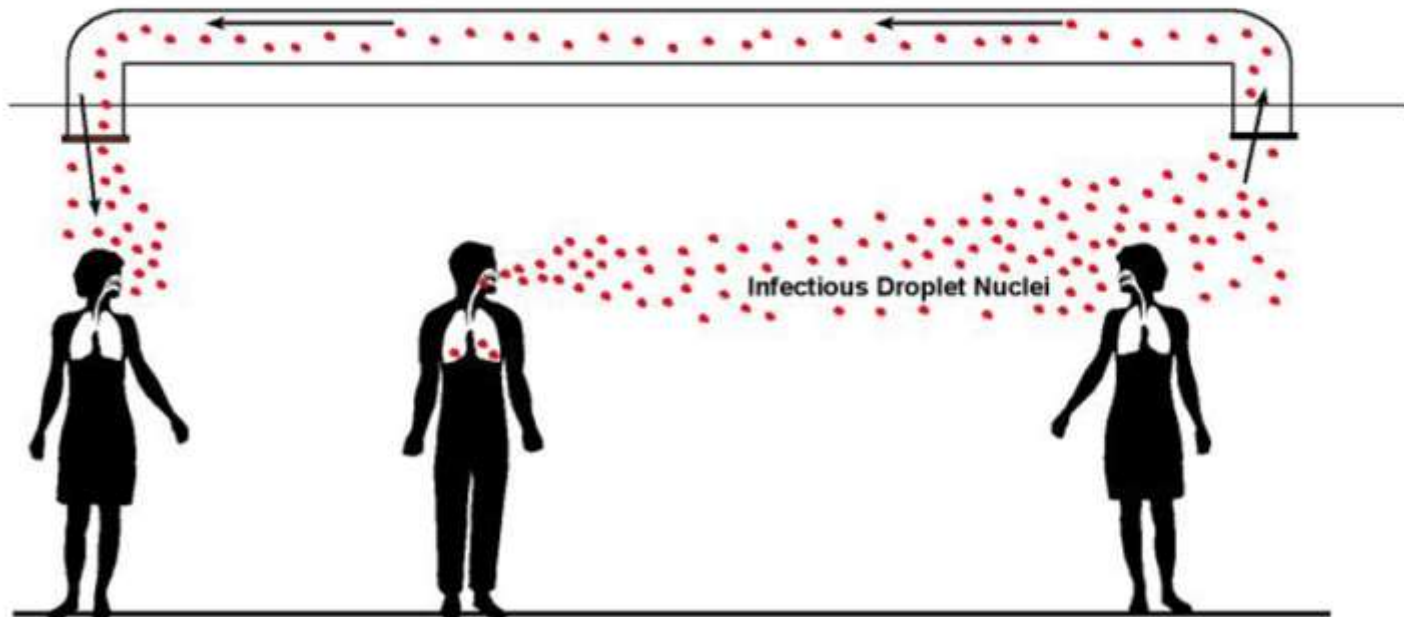


We breathe solids

- Est 2 Tablespoons a day



Droplet Nuclei Travel Within Buildings



Building Specific IAQ Problems

Sick Building Syndrome

- Discomfort
- Headache
- Eye, nose, or throat irritation
- Dry cough
- The cause of the symptoms is not known
- Most of the complaints report relief soon after leaving the building

Bacteria and viruses can multiply on hard surfaces remaining infectious for a very long time unless properly removed




The Scary Truth About the Dirtiest Surfaces You Touch Every Day

Your Money 135,000 types of bacteria on a dollar bill.

Your Mobile A petri dish of 10,000+ germs.

Bacteria found near the drain, can cause staph infections, urinary tract infections, pneumonia & septicaemia.

HTO - Highly Touched Objects

Bacteria

- *Clostridium difficile* (spores) **2 years or more**
- *Escherichia coli* - **up to 16 months**
- *Haemophilus influenza* – **up to 12 days**
- *Streptococcus pneumoniae* - up to 20 days
- *Vibrio cholerae* - **up to 7 days**

Virus

- Adenovirus up to **3 months**
- Severe acute respiratory syndrome (SARS) - **up to 96 hours**
- Influenza virus - **up to 2 days**
- Rotavirus - **up to 60 days**
- Papillomavirus - **up to 7 days**



Preservation of Human Health and Interior Building Surfaces involves:

1. Cleaning with Effective Cleaning Agents and Equipment
2. Continuous Training of Cleaning staff
3. Monitoring:
Surveillance/Inspections
4. Preventative Maintenance Programs







Prevention & Surveillance Through the Use of Effective Cleaners



- A one-step disinfectant cleaner based on proprietary hydrogen peroxide (AHP®) technology; delivers fast, effective cleaning performance.
- Product is both virucidal and bactericidal.
- Provides broad spectrum sanitizing on hard surfaces in 30 seconds; disinfection with 5 minute contact time.
- Meets bloodborne pathogen standards for decontaminating blood and body fluids



Preservation of Human Health Involves Monitoring and Surveillance/Inspections

-  Proper Training on Cleaning Policies and Procedures – **specifications of each facility.**
-  Proper Training on Established CLS **Hygienic standards**
-  Continual Information/Education
-  Continual Monitoring through visible inspections



Preservation of Human Health/Building Surfaces includes Proper Training of Cleaning Staff



Advantages of CLS' very low turnover:

- Retention of corporate knowledge and established company standards
- Minimizes Problems with quality or productivity

Preservation of Human Health and Interior Building Surfaces Includes Scheduled Preventative Maintenance and Equipment Certified for a Healthy Indoor Environment.

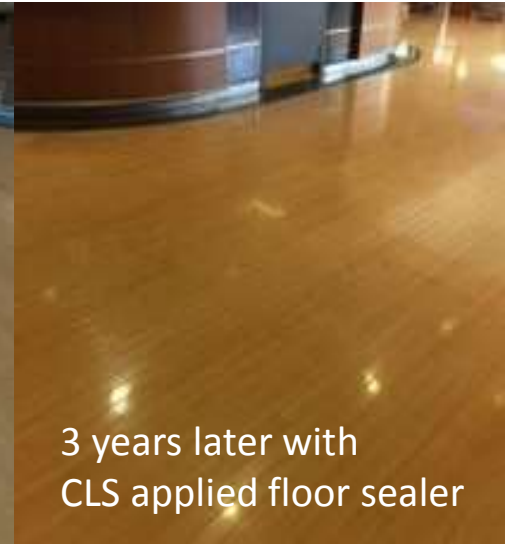


Preservation of Interior Building Surfaces Through Proper Training

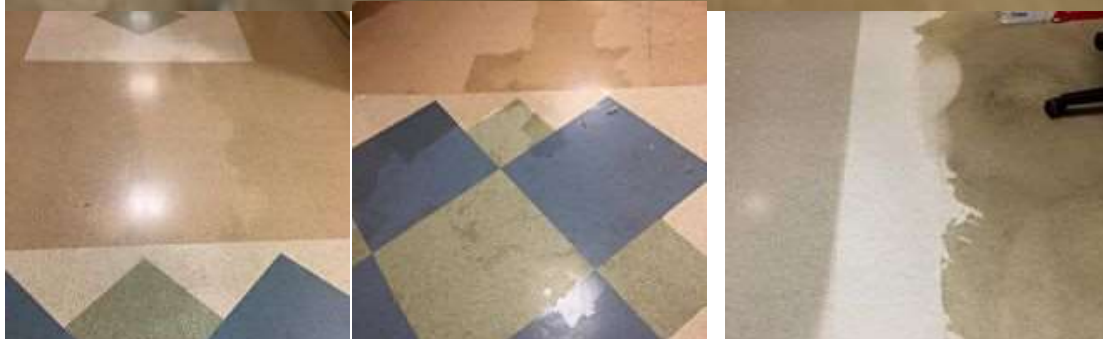


Damage from poorly trained in-house hospital staff

After CLS restoration



3 years later with CLS applied floor sealer



Damage from poorly trained in-house hospital staff



CLS Floor Project Crew continually repairs poor workmanship



Preservation of Human Health and Interior Building Surfaces



Strategies for Creating Healthy Work Environment in Your Workplace

As a business partner, Cleaner Living Services' mission is to create the aesthetics that impress building visitors while delivering a healthy indoor environment.

Susan Popovic
Vice President

Cleaner Living Services, Inc.
1440 Maple Avenue, Suite 3B
Lisle, IL 60532
susan@cleanerlivingservices.com

